

Family Activity Book

Decorative Arts, Craft, & Design

The collection of decorative arts, craft, and design at the Museum of Fine Arts, Houston, focuses on works of extraordinary craftsmanship and originality made from the 17th to the 21st century. The diversity of design is shown through both handcrafted and industrially produced objects.

The Museum is now considered one of the leading American collecting institutions of craft and design. The works of modern and contemporary decorative arts are international in scope and include furniture, tableware, jewelry, and objects made from wood, ceramics, glass, metal, textiles/fiber, plastics, and other materials.

This **ceramic** sculpture by **Viola Frey** is made out of **clay**. Clay is a natural material made up of tiny particles of rock that you can find in the ground. When baked in a **kiln** or clay oven, it becomes hard. Earthenware is a type of clay.

Esther Williams and Deborah Kerr at Pool
by Viola Frey, 1975, earthenware



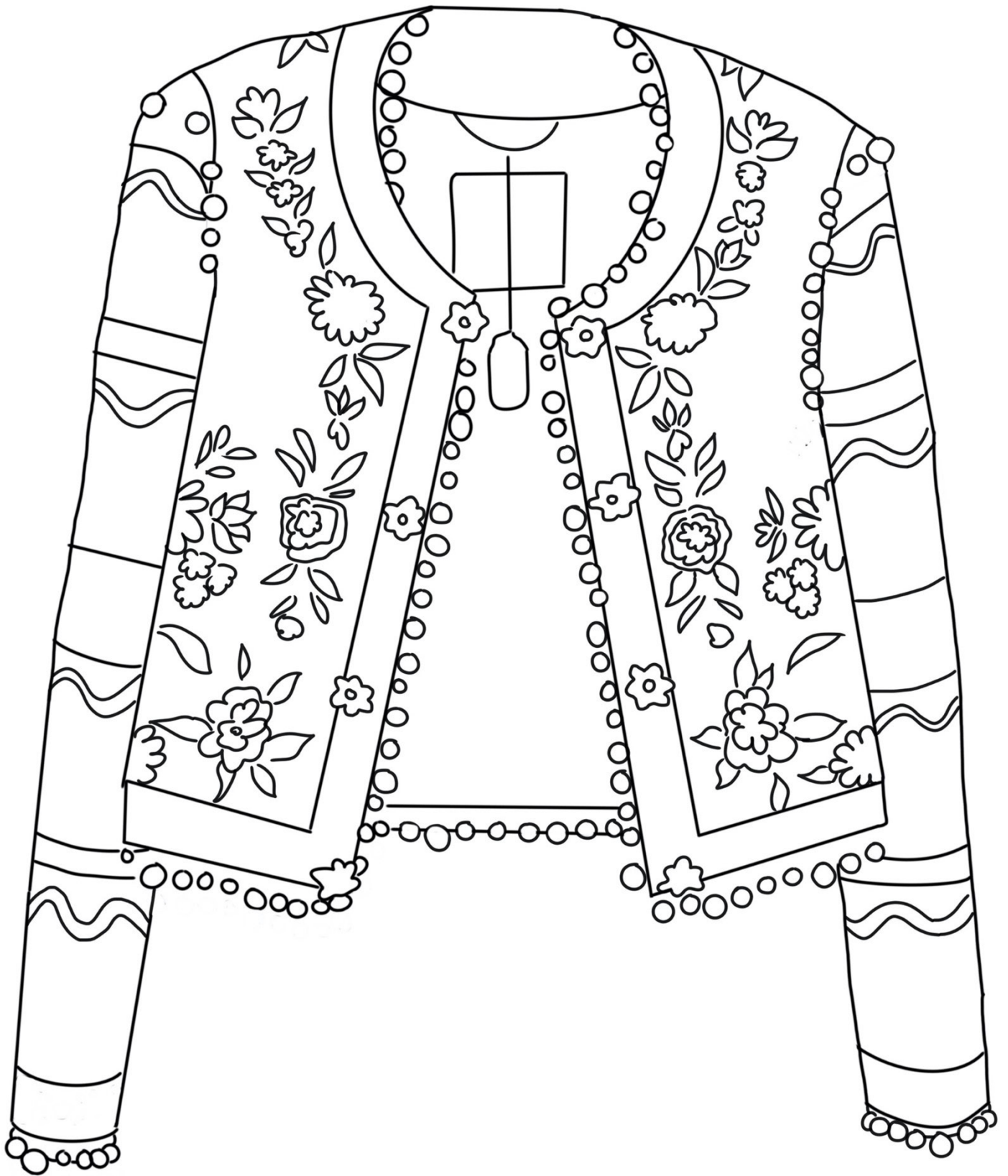
Drawing Warm-ups

Draw a piece of jewelry made out of *unusual* materials.

Draw a chair from the future.

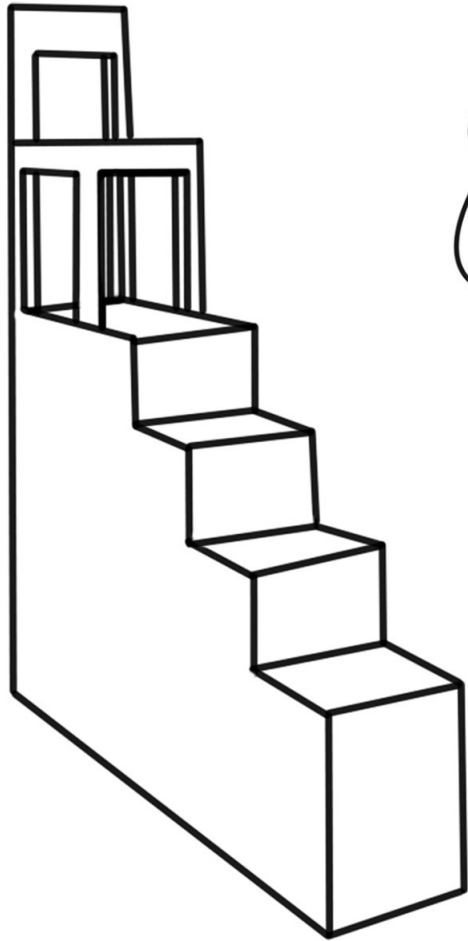
Draw a lamp that has multiple light bulbs.

Design a jacket you would wear to a party.

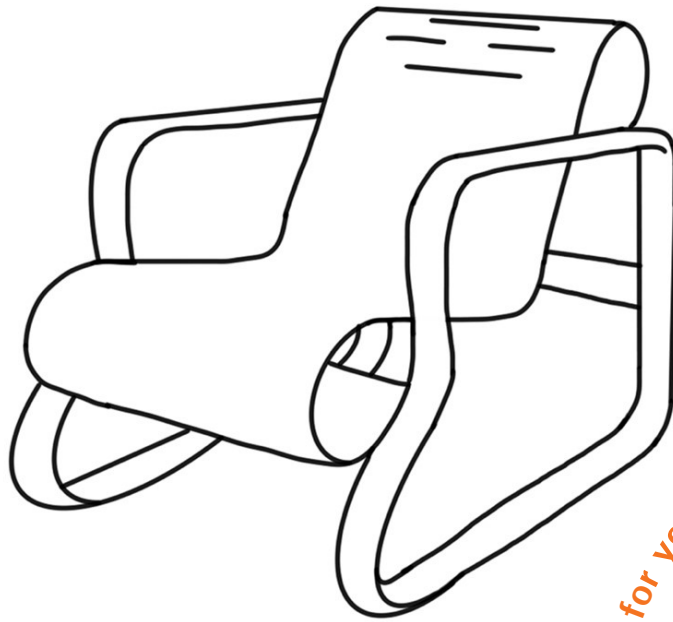


Jacket by Franco Moschino, 1995–96, wool, cotton embroidery, plastic, metallic thread, metal, and polyester felt

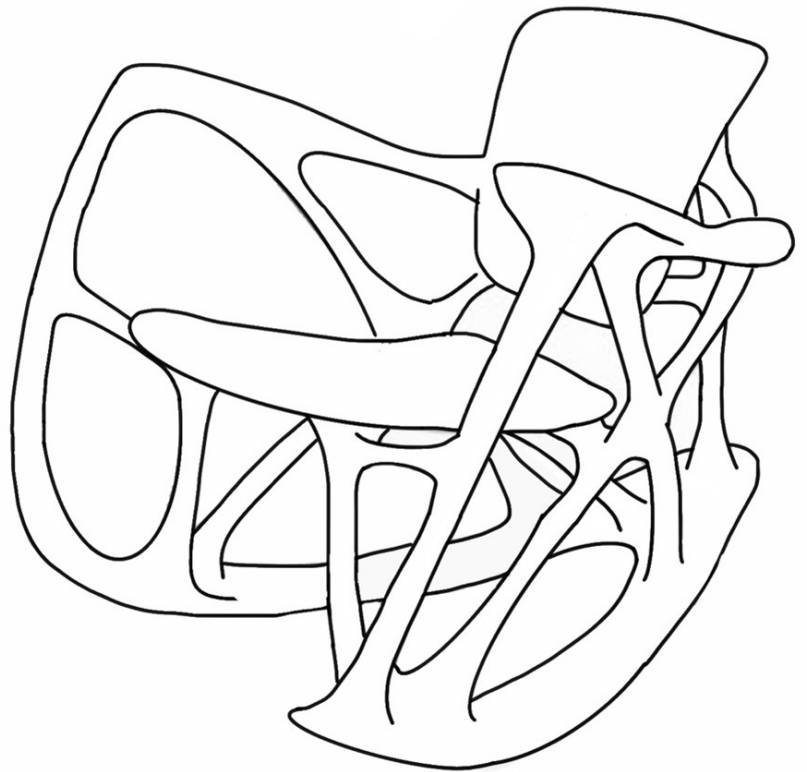
Take a Seat



What would your dream chair look like?



Which chair looks the most comfortable for you?



Clockwise from top:

Armchair, Model 41 by Alvar Aalto, 1934–39, laminated birch plywood;

Bone Rocker by Joris Laarman, 2008, black marble and resin;

Monumentino da Casa by Alessandro Mendini, 1974, wood and tape

Found Materials

This necklace by Kiff Slemmons is made out of some unusual materials not usually used in **jewelry**. Do you recognize any of the materials used in this necklace? Write down some of the materials you see.

- .
- .
- .

Could you design something similar using things from your desk, school bag, or your home? What ***found materials*** would you use?

The title of this artwork is *Protection*. Why do you think the artist called it that? What would you name your piece of jewelry?

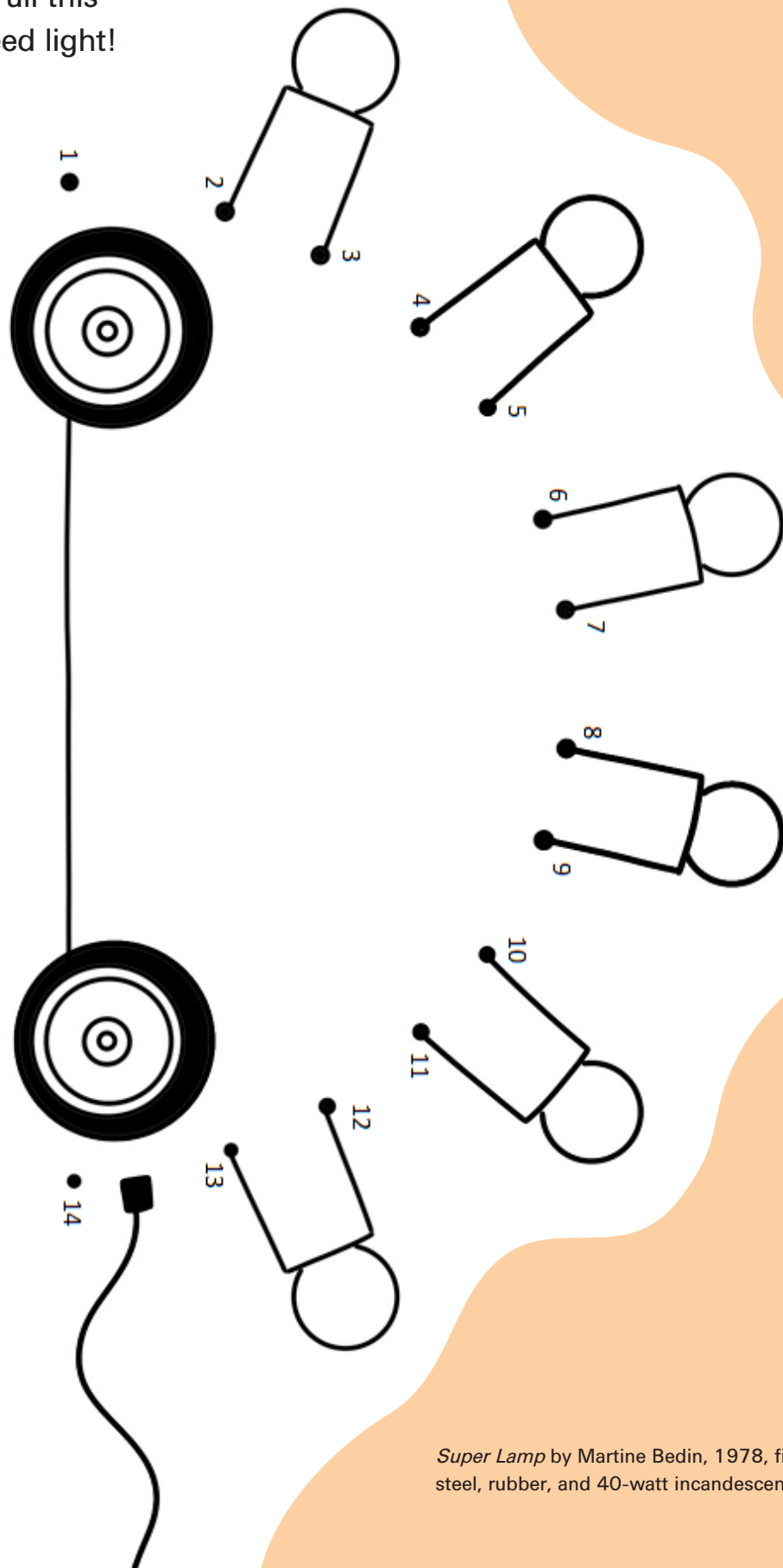


Kiff Slemmons, *Protection*, 1991, brass, silver, pencils, horsehair, leather, nickel, and mirror, the Museum of Fine Arts, Houston, gift of Don and Rita Newman, 2009.1659.

© Kiff Slemmons

Connect the Dots

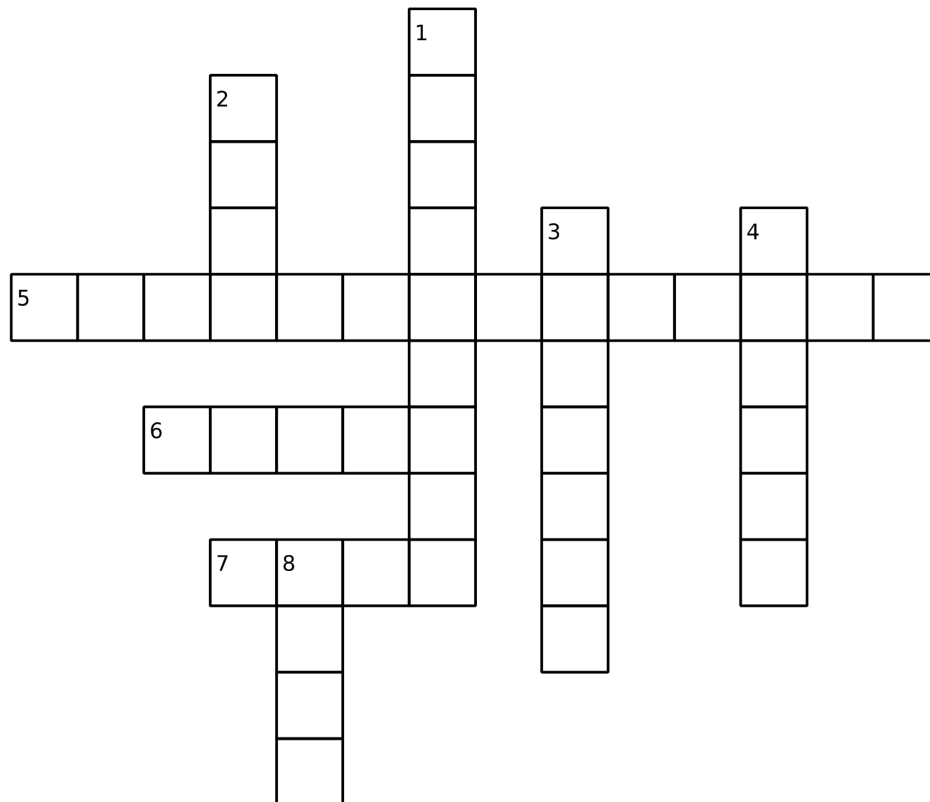
The wheels on the *Super Lamp* go round and round. Pull this lamp wherever you need light!



Super Lamp by Martine Bedin, 1978, fiberglass, enamel, steel, rubber, and 40-watt incandescent bulbs

Crossword Puzzle

Decorative Arts, Craft, & Design



Down:

1. ceramic artist
2. a clay oven
3. something decorative to wear on your body
4. something to wear when it's cold outside
8. something to light up a room

Across:

5. art made from things you find and did not buy
6. something to sit in
7. art-making material that comes from the ground

Learn more about these and other works of art: lta.mfah.org.
Explore more at-home learning activities: mfah.org/itahome.

Family Programs at the Museum of Fine Arts, Houston, receive generous support from the Junior League of Houston, Inc.

All Learning and Interpretation programs at the Museum of Fine Arts, Houston, receive endowment funds provided by Louise Jarrett Moran Bequest; Caroline Wiess Law; the William Randolph Hearst Foundation; Cyvia and Melvyn Wolff; the National Endowment for the Humanities; the Fondren Foundation; BMC Software, Inc.; the Wallace Foundation; the Neal Myers and Ken Black Children's Art Fund; Mr. and Mrs. A. L. Ballard; Mr. and Mrs. Charles W. Tate; the Eleanor and Frank Freed Foundation; Virginia and Ira Jackson; the Favrot Fund; Neiman Marcus Youth Arts Education; gifts in memory of John Wynne; and gifts in honor of Beth Schneider.